



# GAT MONTHLY MEMBERSHIP PROGRESS REPORT

Results as of: 5/31/2021

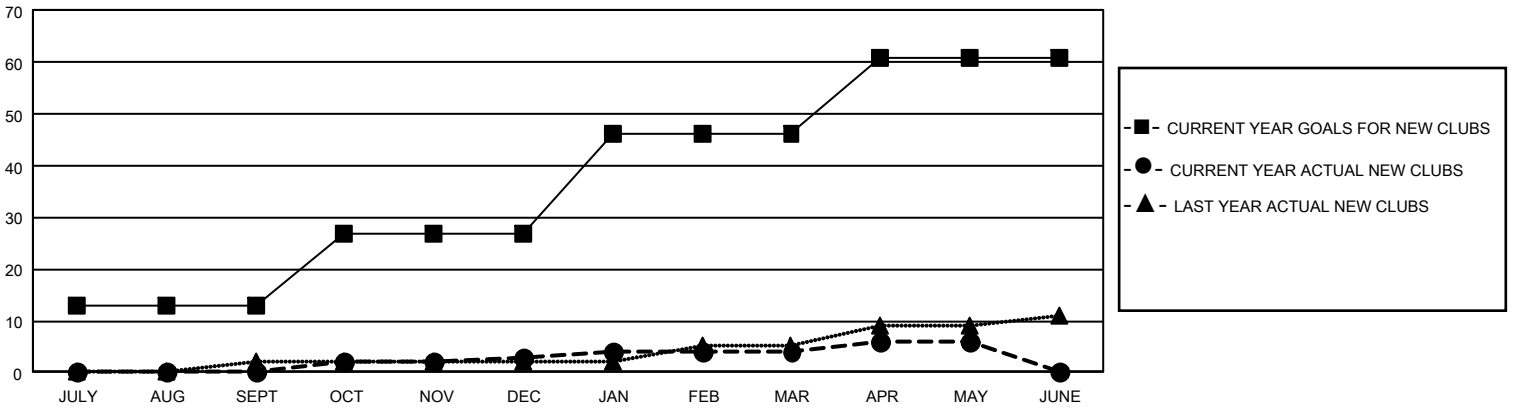
## GAT Constitutional Area 5 - Japan

REPORT DOES NOT INCLUDE CLUBS IN UNDISTRICTED AREAS.

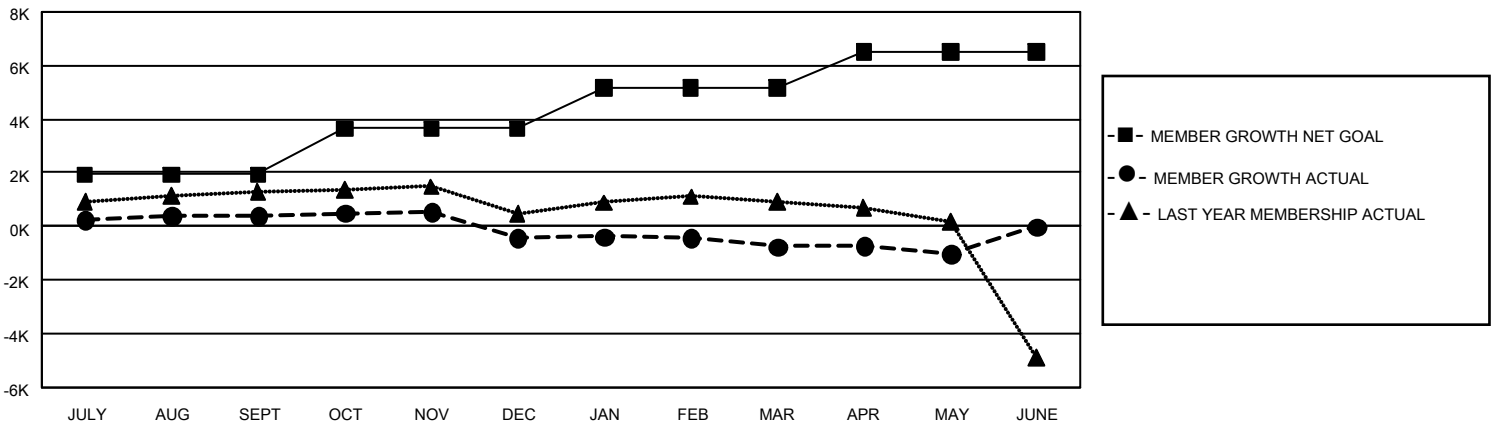
Clubs			
RESULTS FOR 2020-2021			
QUARTER	NEW CLUB GOAL	NEW CLUBS	DROPPED CLUBS
JULY/AUG/SEPT	39	0	5
OCT/NOV/DEC	42	3	12
JAN/FEB/MAR	57	1	3
APR/MAY/JUNE	45	2	1

Members			
RESULTS FOR 2020-2021			
QUARTER	MEMBER GROWTH NET GOAL	MEMBER GROWTH ACTUAL	DROPPED MEMBERS ACTUAL (including transfers)
JULY/AUG/SEPT	1924	2,283	1,798
OCT/NOV/DEC	1716	1,380	2,107
JAN/FEB/MAR	1538	1,128	1,397
APR/MAY/JUNE	1337	871	1,114

GOALS AND ACTUAL NEW CLUBS CUMULATIVE



GOALS AND ACTUAL MEMBERS CUMULATIVE



<b>DROPPED CLUBS: 21</b>  <b>DROPPED MEMBERS</b> DECEASED 830 CLUB CANCELLED 59 OTHER 5,525 <b>TOTAL 6,414</b>	1,831 CLUBS OF 2,914 ADDED 1 OR MORE NEW MEMBERS	<b>GENDER DISTRIBUTION</b> MALE 80,172 (76.19%) FEMALE 25,055 (23.81%)
	<a href="#">CLICK HERE FOR CUMULATIVE MEMBERSHIP DATA</a>	TOTAL FAMILY UNIT MEMBERS 37,677 FAMILY MEMBERS PAYING HALF DUES 20,768